

ASSEMBLY INSTRUCTIONS

You will find in the set:



4 legs



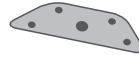
4 washers



4 M4 metric screws



4 M8 screws

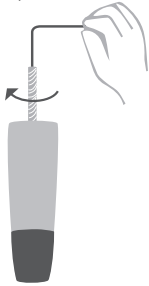


4 mounting plates

Remove all the elements from the packaging and install the legs step by step. See for yourself how simple it is!

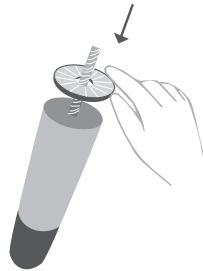
Step 1

Screw the screw into the leg with an Allen key. The screw should stick up approximately 6-7 mm.



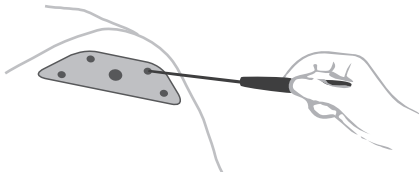
Step 2

Put a washer on the leg.



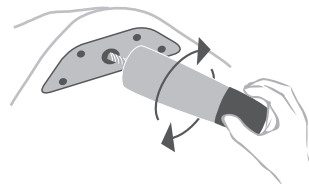
Step 3

Screw the mounting plate securely to the chair or sofa with screws. The plate should not move.



Step 4

Tighten the leg to the plate.



LITTLE
F\O|R\M
STUDIO

FINISHED! AND NOW...
FREE THE INTERIOR