

ASSEMBLY INSTRUCTIONS

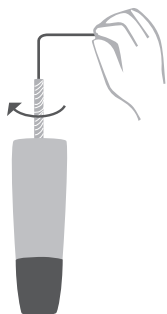
You will find in the set:



Remove all the elements from the packaging and install the legs step by step. See for yourself how simple it is!

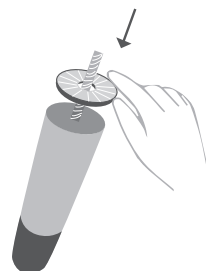
Step 1

Screw the screw into the leg with an Allen key. The screw should stick up about 1.5-2 cm.



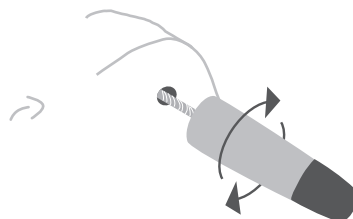
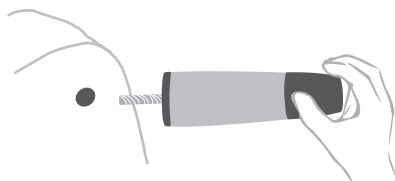
Step 2

Put a washer on the leg.



Step 3

Screw the leg onto the sofa.



LITTLE
F\O|R\M
STUDIO

FINISHED! AND NOW...
FREE THE INTERIOR