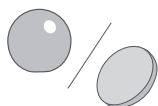


ASSEMBLY INSTRUCTIONS

Depending on the set, you will find in the package:



a knob or hanger



a spacer for the hanger



double threaded screws



M4 metric screws



ø6 mm wall plugs



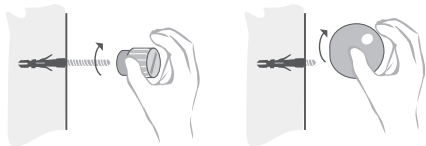
a tightener

MOUNTING THE KNOB TO THE WALL

Make a hole in the wall with a ø6 mm drill bit to a depth of 7.5 cm and place a plastic wall plug in it.

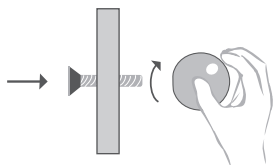
On the metric thread of the double-threaded screw, place the tightener and tighten the screw so that it protrudes 0.8-1.0 cm from the wall. Now, remove the tightener and put the knob in its place, then tighten gently.

NOTE: DO NOT TIGHTEN THE DOUBLE-THREAD WITH THE KNOB, USE ONLY THE TIGHTENER!



MOUNTING THE KNOB TO FURNITURE PIECES

In the absence of any hole, drill one through and use the M4 metric screw to attach the knob to the furniture piece.



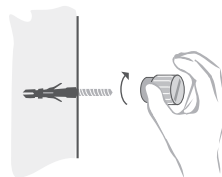
If you want to replace the knob for a new one, just unscrew the old knob and tighten the new one in the place of the old one.

MOUNTING THE HANGER TO THE WALL

Step 1

Make a hole in the wall with a ø6 mm drill bit to a depth of 4.5 cm and place a plastic wall plug in it.

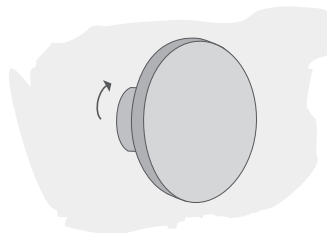
Place the tightener on the metric thread of the two-threaded screw and tighten it so that it sticks up from the wall to a length of 3.8-4.0 cm.



Step 2

Now, remove the tightener, insert the spacer onto the sticking up thread, and then gently tighten the hanger.

NOTE: DO NOT TIGHTEN THE DOUBLE-THREAD WITH THE HANGER SPACER, USE ONLY THE TIGHTENER!



FINISHED! AND NOW...

FREE THE INTERIOR