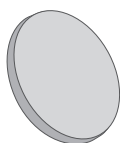


ASSEMBLY INSTRUCTIONS

In the set you will find:



3 legs



1 table top



3 slanted mounting plates



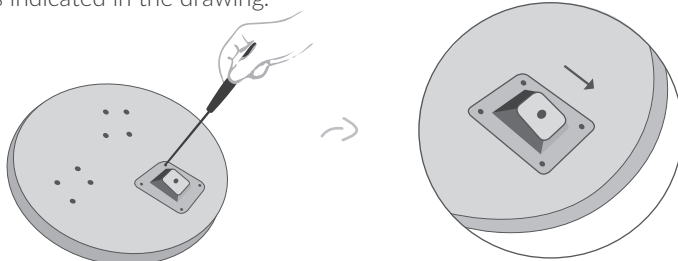
12 UNIX screws

Remove all the items from the packaging and assemble the table step by step. See for yourself how simple it is!

Step 1

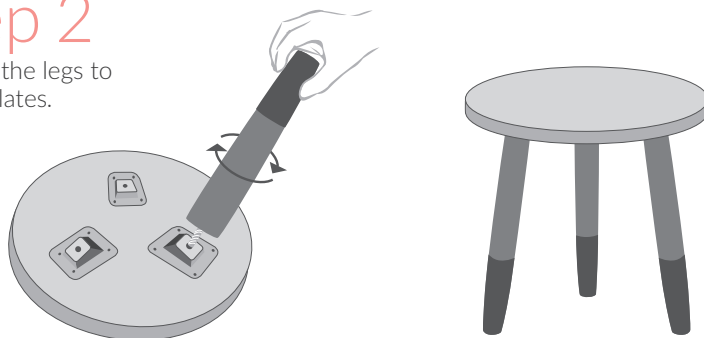
Turn the table top so that the holes are visible at the top. Make sure the surface under the table top is even.

Mount the mounting plates with the UNIX screws to the holes closest to the centre of the table top. The plates should be inclined towards the edge of the table top as indicated in the drawing.



Step 2

Tighten the legs to all the plates.



FINISHED! AND NOW...

FREE THE INTERIOR